

WAUGAL WANDER

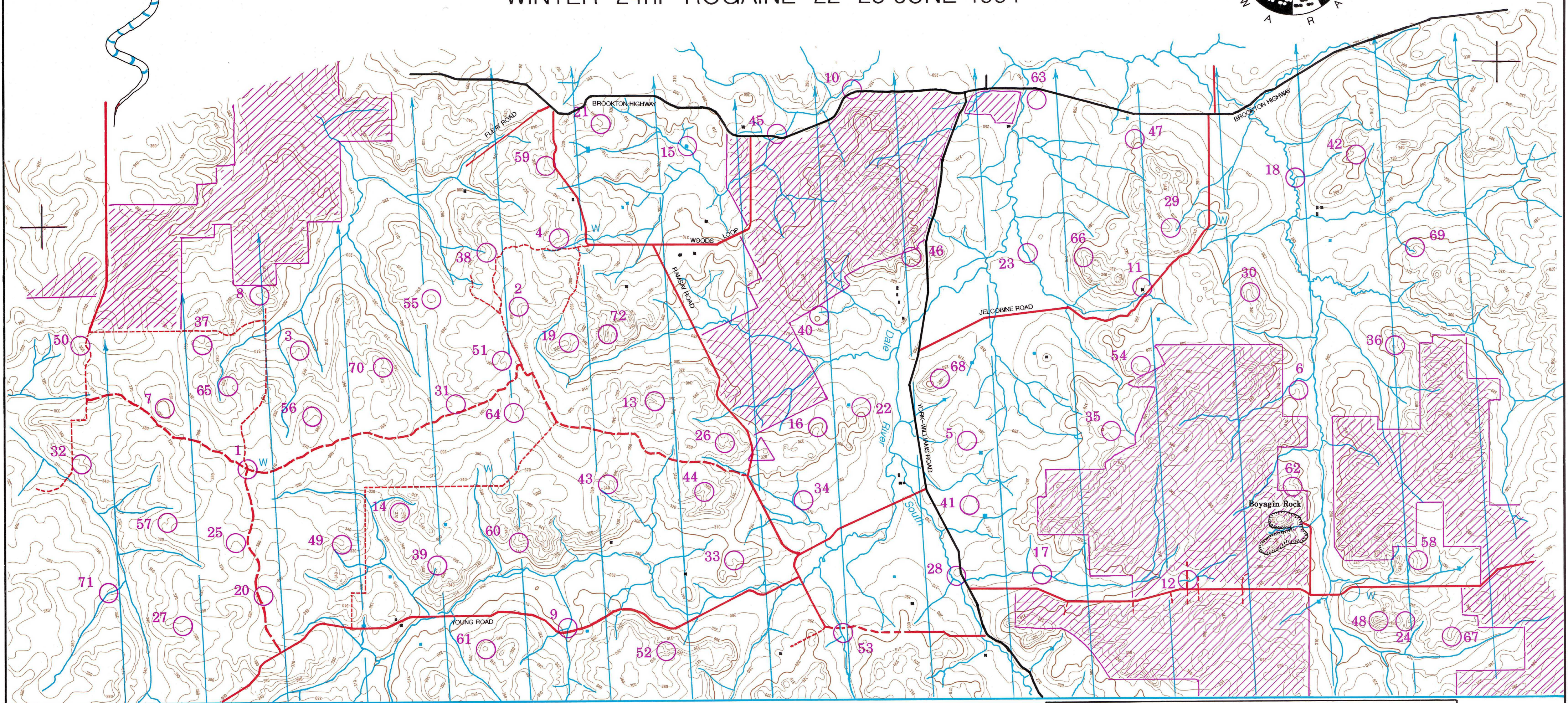
WINTER 24hr ROGAINE 22-23 JUNE 1991

Setters: Peter & Anne Watson
 Peter & Judy Hill

Vetters: Roy Stone
 Urs Duetschler
 Keith Harvey

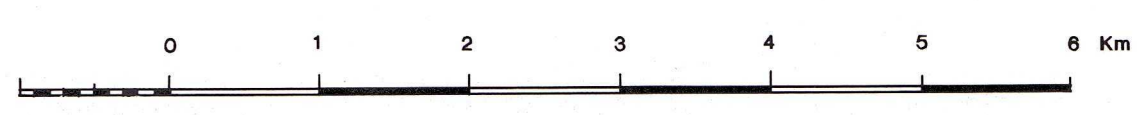


A big thank you to all the landowners who granted us access to their properties for this event.



- SEALED ROAD ———
 - GRAVEL ROAD ———
 - FORESTRY ROAD - - - - -
 - FIREBREAK/FARM RD - - - - -
 - WATERCOURSE ~~~~~
 - BUILDING ■
 - DAM ■
 - CONTOUR LINES 10m INTERVALS
 - MAGNETIC NORTH LINES ↑
- CONTROL 1 ○
 - HASH HOUSE △
 - OUT OF BOUNDS ▨
 - WATER DROP W ○ OR ○^W

Map drawn by Peter Watson based on D.O.L.A. Contours and topographical maps



SCALE 1:50 000

THE WAUGAL

The Waugal is a very powerful mythological character of Bibbulmun tradition. He is an incarnation of the Koorndon Marma man, the creator.

The story of the Waugal begins a long, long time ago when the Aborigines had learned to live in harmony with each other and their environment. Travel routes were opened up and there was more contact between tribes, which was both good and bad for the people of the land.

Survival knowledge and languages were shared and there were many marriages between tribes. However, there were people who ignored the sacred spirit teachings and people began to feel fear, distrust and even hatred.

The Waugal finally presented himself in a dream to a true hearted son of the Bibbulmun, Buerna, at a time when the tribe had lost contact with their customs and laws and many karrwarra (deformed) children were born because kinship rules were being ignored.

In Buerna's dream the earth was covered with water and the Waugal was swimming, carrying him and members of the tribe who had respected the ancient traditions away from their drowning kin.

The Waugal eventually reached a sacred rock and left Buerna and his small band with instructions to keep their laws and to hold him as their totem.

The rock he left them on was Boyagin rock and the Waugal, the sacred snake, sleeps in it still.

Reprinted by kind permission Dept of CALM

WAUGAL WANDER — 'WINTER' 24 HOUR ROGAINE 22nd — 23rd JUNE 1991

NO	DESCRIPTION	POINTS
1	Blazed tree - go 90m @ 150°	10
2	Head of a broad gully	10
3	The spur	10
4	A spur	10
5	A rock knoll	10
6	The spur	10
7	The Trig point - Luptons 404m	20
8	The gully	20
9	Middle of a copse	20
10	The fence bend	20
11	The ruin - inside	20
12	The creek crossing	20
13	An erosion gully junction	30
14	The rocky summit	30
15	The dam	30
16	In a tank	30
17	The spoked wheel	30
18	The stream junction	30
19	Dead tree with hangover	30
20	Bare rock surface - northern edge	30
21	A rocky knoll	30
22	A shallow gully	30
23	A stream bend	30
24	Head of the gully	30
25	The broad valley	40
26	A balancing boulder	40
27	The spur	40
28	A bend in the stream	40
29	A cliff - 2m	40
30	Bare rock surface - north end	40
31	The broad gully	50
32	A rocky spur	50
33	A pit	50
34	A rocky outcrop - 10m x 70m	50
35	A small rocky knoll	50
36	The knoll	50

NO	DESCRIPTION	POINTS
37	Foot of a 4m breakaway	60
38	Head of a stream	60
39	The watercourse	60
40	50m south of a waterhole	60
41	A windmill tail	60
42	The rocky spur - north east end	60
43	The spur	60
44	A watercourse junction	60
45	North side of bridge - below road level	60
46	A pair of 6m boulders - south side	60
47	Tree on Turrett Rock	60
48	The spur	60
49	The spur - south edge	70
50	Foot of a 3m breakaway	70
51	Bare rock surface 10m x 10m - east edge	70
52	Head of a watercourse	70
53	A boulder cluster - 2.5m	70
54	The spur	70
55	The broad knoll	80
56	Head of an erosion gully	80
57	A watercourse junction	80
58	A small dam	80
59	A watercourse	80
60	The rocky spur	80
61	The knoll	90
62	A shallow erosion gully	90
63	A windmill	90
64	Subtle saddle - the neck	90
65	Head of a small watercourse	90
66	The gully	90
67	The spur	100
68	The rock with the handle on top	100
69	Head of a minor watercourse - near a tank	100
70	Head of a gully	100
71	The creek bend - look in coffee pot!!	100
72	The summit - top spot!!	100